

Chemical Injection Data Logger

Avoid the unnecessary expense of chemical over-treatment and the high risk of under-treatment with the new RDC-CI Chemical Injection Data Logger.

Accurate measurement

The RDC-CI Data Logger accurately monitors chemical flow through injection quills and nozzles using a positive displacement flow meter mounted on the discharge side of the chemical injection pump to calculate chemical delivery rates.

Compare RDC-CI Data with Corrosion Monitoring Data

The data from the RDC-CI Chemical Injection Monitor is exported in CSV format, making it easy to import into other software programs for more detailed analysis, including comparisons of injection rates to corrosion monitoring probe data over the same time period.

Gain accurate data to improve chemical injection performance and reduce costs

Reduce the expense of chemical over-treatment. Quickly discover chemical flow interruptions caused by low tank levels, pump failures, or high-temperature vapor locks. Gain immediate, improved, and economical asset management with the RDC-CI Chemical Injection Data Logger.

Suitable for multiple applications

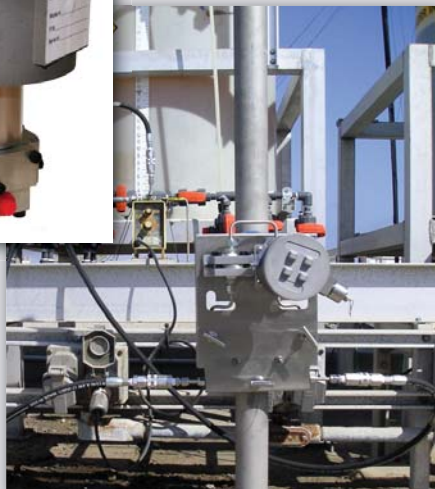
Available for use with a wide variety of chemicals and in operating temperatures ranging from -40 °F to 158 °F (-40 °C to 70 °C), the Data Logger gathers data in 0.0005-gallon increments, yielding very accurate flow rates over user-selectable time periods ranging from two minutes to one day. The Data Logger accepts a wide range of chemical flow rates — from 0.5 to 100 gallons per day. A long, six-month battery life enhances the Logger's accuracy and reliability.

Quick and Easy Installation

The Data Logger can be piped permanently, or piped temporarily using our flexible hose accessory kit with quick-connect couplings.

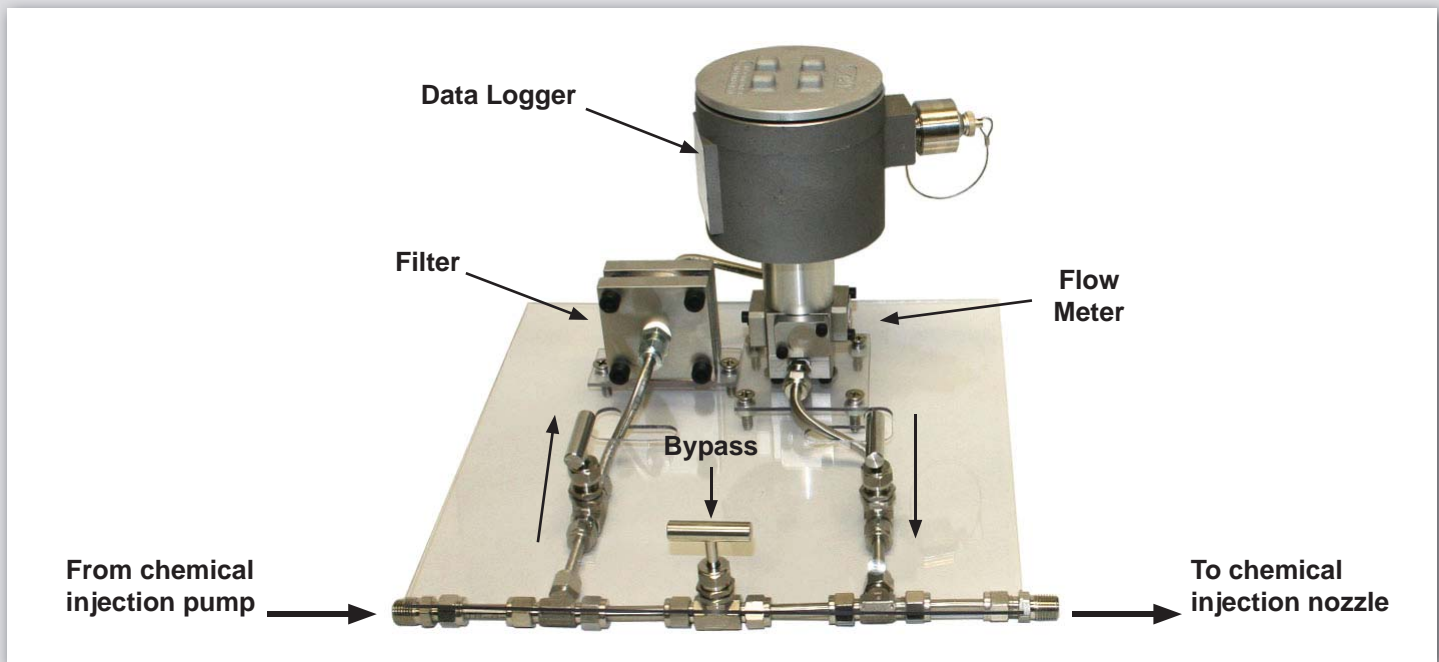
Key benefits of the RDC-CI Chemical Injection Data Logger

- Ensures continuous and cost-effective chemical injection
- Accurate chemical flow monitoring
- User-adjustable graphical analysis software included
- Suitable for a wide variety of applications and chemicals
- Battery operated for quick installation in remote locations
- Easy to use



Ensure continuous and cost-effective chemical injection rates!

Chemical Injection Data Logger

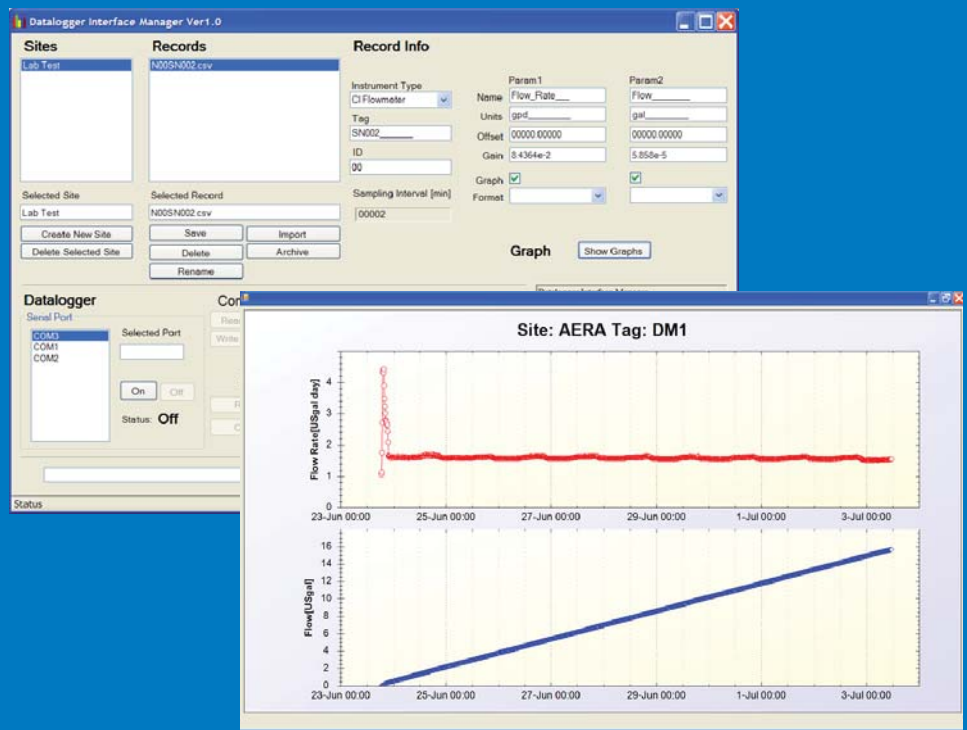


Easy-to-interpret graphed injection rates

Collected data can be transferred directly to a laptop if located in a safe area, or with a Checkmate™ DL or Checkmate™ Plus in a hazardous area. Chemical delivery rates are easy to interpret by viewing the graphic display of the included Data Logger Interface Manager software.



Checkmate™ Plus
Data Transfer Unit



Data Logger Interface Manager Graphical Display Interface of
Flow Rate and Integrated Flow with synchronized zooming

Please contact us for more information about products and systems:



RCS Corporate Headquarters
11841 E. Smith Avenue
Santa Fe Springs, CA 90670
Tel: +1-562-949-0123
Fax: +1-562-949-3065

RCS Sales Locations
Houston, Texas, USA
Tel: +1-281-219-8200
Aberdeen, UK
Tel: +44 (0) 1224 825500

Caracas, Venezuela
Tel: +58 212 7712301
Singapore
Tel: +65 64056657

E-mail: sales@cosasco.com • Website: www.cosasco.com