

Model **SCA-1/SCA-1L** Single Channel **CORRATER®** Instrument



Features:

- **Single Range, 0-2 MPY, 0-20 MPY**
- **0-50 µMPY or 0-500 µMPY**
- **Continuous Readout of Corrosion Rate**
- **Weatherproof NEMA 4X Enclosure**
- **Selectable Multipliers for Different Alloys**
- **Isolated 4-20mA Output (SCA-1)**
- **Internal Data Logger with PC Interface (SCA-1L)**
- **CE Compliant**

The SCA-1/1L is a single range field mountable CORRATER® instrument for continuous corrosion monitoring of water systems. The instrument is particularly suited to on-line monitoring applications where chemical treatment is being employed and compliance with regulatory standards is highly important.

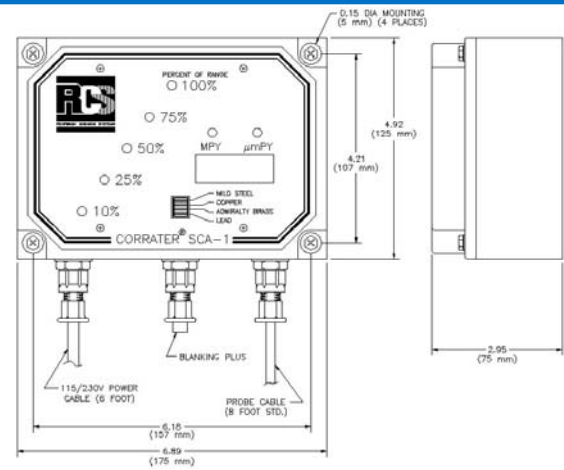
The lower range units are particularly useful in potable water applications where the corrosion rates of lead, copper and carbon steel are low. This system will assist municipal water authorities in determining the chemical treatment effectiveness to reduce lead content according to EPA regulations. The higher range is more applicable to

cooling waters where the effectiveness of chemical treatment programs are being evaluated. The SCA-1/1L is compatible with all CORRATER® probes and different alloys can be accommodated by selecting the multiplier on the front panel.

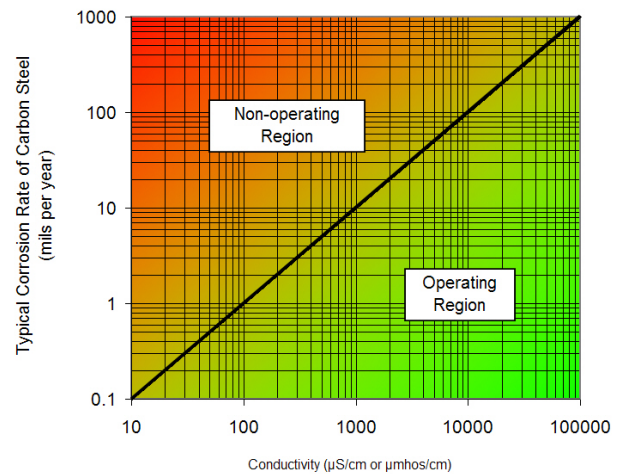
The SCA-1/1L is housed in a rugged weatherproof enclosure that permits easy viewing of the corrosion rate. The 4-20 mA analog output of the SCA-1 allows the corrosion rate to be recorded or sent to a plant monitoring system. The SCA-1L has an internal data logger that will retain up to 82 days of data which can be directly downloaded to a PC with the SCA-1L Software.

Specifications:

- **Single Channel Ranges Available:**
0-2 MPY, 0-20 MPY
0-50 μ MPY, 0-500 μ MPY
- **Accuracy:** $\pm 5\%$ of full scale
(Based upon Randall's equivalent circuit)
- **Operating Range:** See Graph
- **Resolution:** 0.5% of full scale
- **Cycle Time:** 15 minutes
- **Corrosion Rate Display:** 3 Digit LED
- **Corrosion Rate Indication:** LED indicators for 10, 25, 50, 75 and 100% of full scale
- **Multiplier Selection:** 1.00, 1.67, 2.00 or 2.57
- **Output:** SCA-1: Isolated 4-20 mA into 600 ohms maximum
SCA-1L: RS-232C download of stored data to IBM PC or equivalent
- **Power:** 115 or 230 VAC, 50/60Hz, 10 watts
- **Operating Temperature Range:** +32°F to 140°F (0°C to 60°C)
- Supplied with integral 6 foot probe cable with type B CORRATER® probe connector
Optional extension cables available, maximum 100'
- **Data Logging (SCA-1L):** Stores over 7750 data points, or 82 days of data @ 15 minute cycle time
- Compliant to EMC directive 89/336/EC



Operating Range for
SCA-1/SCA-1L



Note: Based on 20% error limit (see ASTM G96)

Ordering Information:

Model	Description										
SCA-1	Single Channel Corratr Instrument w/4-20 mA output										
SCA-1L	Single Channel Corratr Instrument w/ Internal Datalogger										
	<table border="1"> <thead> <tr> <th>Code</th> <th>Range</th> </tr> </thead> <tbody> <tr> <td>1</td> <td>0-2 mils per year (MPY)</td> </tr> <tr> <td>2</td> <td>0-20 mils per year (MPY)</td> </tr> <tr> <td>3</td> <td>0-50 micrometers per year</td> </tr> <tr> <td>4</td> <td>0-500 micrometers per year</td> </tr> </tbody> </table>	Code	Range	1	0-2 mils per year (MPY)	2	0-20 mils per year (MPY)	3	0-50 micrometers per year	4	0-500 micrometers per year
Code	Range										
1	0-2 mils per year (MPY)										
2	0-20 mils per year (MPY)										
3	0-50 micrometers per year										
4	0-500 micrometers per year										
	<table border="1"> <thead> <tr> <th>Code</th> <th>Data Output</th> </tr> </thead> <tbody> <tr> <td>1</td> <td>With isolated 4-20 mA output (SCA-1 only)</td> </tr> <tr> <td>2</td> <td>Datalogger without software/cable (SCA-1L only)</td> </tr> <tr> <td>3</td> <td>Datalogger with PC software & cable (SCA-1L only)</td> </tr> </tbody> </table>	Code	Data Output	1	With isolated 4-20 mA output (SCA-1 only)	2	Datalogger without software/cable (SCA-1L only)	3	Datalogger with PC software & cable (SCA-1L only)		
Code	Data Output										
1	With isolated 4-20 mA output (SCA-1 only)										
2	Datalogger without software/cable (SCA-1L only)										
3	Datalogger with PC software & cable (SCA-1L only)										
	<table border="1"> <thead> <tr> <th>Code</th> <th>Line Power</th> </tr> </thead> <tbody> <tr> <td>115</td> <td>115 VAC, 50/60 Hz</td> </tr> <tr> <td>230</td> <td>230 VAC, 50/60 Hz</td> </tr> </tbody> </table>	Code	Line Power	115	115 VAC, 50/60 Hz	230	230 VAC, 50/60 Hz				
Code	Line Power										
115	115 VAC, 50/60 Hz										
230	230 VAC, 50/60 Hz										
SCA-1	— 2 — 1 — 115 ← Typical Order Number										
SCA-1L	— 2 — 3 — 115 ← Typical Order Number										



Rohrbach Cosasco Systems, Inc.
11841 East Smith Avenue
Santa Fe Springs, CA 90670, USA
Tel: (1) 562-949-0123 Fax: (1) 562-949-3065
US Toll Free: 800-635-6898
E-Mail: sales@rohrbackcosasco.com
Web Site: <http://www.rohrbackcosasco.com>



ISO 9001:2000
Certificate No. FM 10694