

Ultracorr[®]

Pipe Repair

Pipe Repair Procedure for Ultracorr[®]
Transducer Installation Using
STOPAQ[®]



© 2007 Rohrback Cosasco Systems, Inc. All rights reserved.

Ultracorr[®] is a trademark of Rohrback Cosasco Systems, Inc.

STOPAQ[®] is a trademark of STOPAQ EUROPE B.V.

No part of this manual may be reproduced or transmitted in any form or by any means, electronic or mechanical, including photocopying and recording, for any purpose, without the express written permission of Rohrback Cosasco Systems, Inc.

Overview

STOPAQ[®] is a proven way of repairing your pipe and preventing corrosion after the Ultracorr[®] transducer installation. STOPAQ[®] is considered a visco-elastic fluid, which means it feels like a solid or rubber, but still has the characteristics of a fluid. These fluid properties allow the material to adhere to the pipe remarkably while providing resistance against cathodic disbonding and giving excellent corrosion protection.

Materials

The STOPAQ[®] materials included in the transducer installation repair kit are as follows:

- STOPAQ[®] Wrappingband CZ H Paste – To mold around the Transducer.
- STOPAQ[®] CZ H Wrappingband – To cover the CZ H Paste.
- STOPAQ[®] Covering Tape - For mechanical protection of the CZ H Paste and Tape

Procedure

1. Before beginning to repair the pipe with the STOPAQ[®] material, it is important to let the epoxy used in the Ultracorr[®] transducer installation to cure a full 24hrs. Failure to do so can result in movement or detachment of the transducer which will result in ultrasonic signal loss and incorrect measurements. See Figure 1.

Figure 1. Let epoxy cure 24 hours after installation.

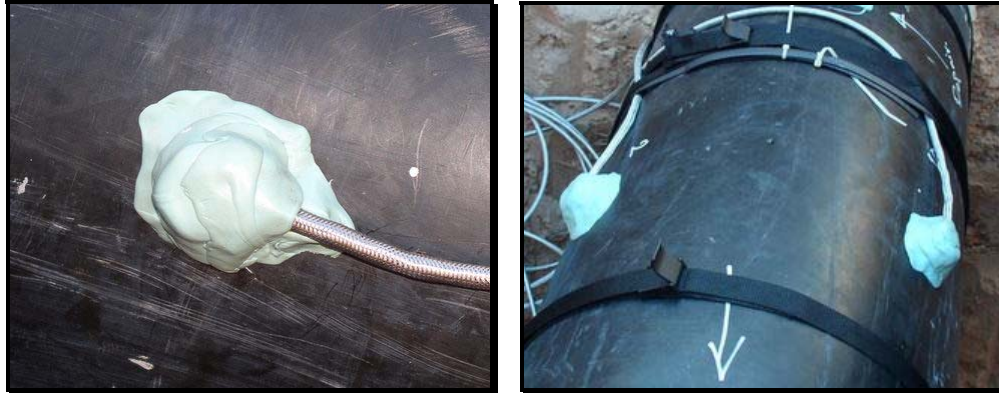


2. Use STOPAQ[®] CZ H Paste and mold it around the transducer, creating a mound of paste with the transducer encased inside. Also be sure to cover all exposed metal with the paste. Pay special attention to the cable. Apply the paste underneath the cable, allowing the cable to exit the transducer body parallel to the pipe a few inches before being bent. This will prevent unwanted stress in the cured epoxy, which can cause the transducer to come loose. See Figure 2 and 3.

Figure 2. Mold CZ H Paste around the transducer, encasing it.



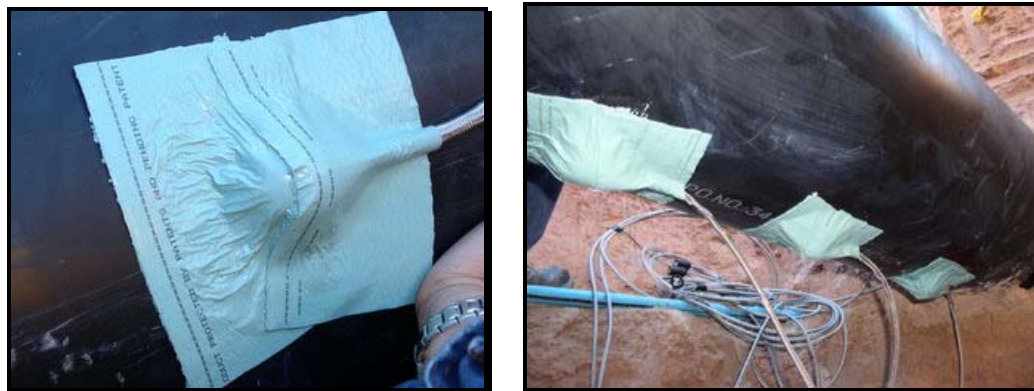
Figure 3. Mold paste under cable, keeping it parallel to the pipe.



3. After you have covered all exposed metal and completely encased the transducer in the CZ H Paste, you can now cover it with the CZ H Wrappingband.

The STOPAQ[®] kit includes 8 inches of Wrappingband per transducer. Cut the CZ H Wrappingband into 4 inch long pieces. Using two pieces per transducer apply the Wrappingband over the top of the mound with the encased transducer, pressing firmly with your hands to acquire good adhesion. See Figure 4.

Figure 4. Apply CZ H Wrappingband Over top of mound of paste.



4. When all transducers have been covered by the STOPAQ[®] CZ H Wrappingband and Wrappingband Paste, you can then cover the entire pipe with STOPAQ[®] Covering Tape to give the CZ H materials some means of mechanical protection. Start the Covering Tape a few inches before the CZ H material and begin wrapping the entire pipe. As you go, overlap each previous wrap by about 1/4th of the width of the tape. Pull the tape gently as it is being applied to give it some slight tension and not to allow any air bubbles. Keep wrapping the entire pipe a few inches past the last transducer. Cut the tape and make sure the end securely adheres to the pipe, so it may not peel off. You are now done and ready for backfill. See Figure 5

Figure 5. Wrap entire pipe in Covering Tape to provide mechanical protection.

