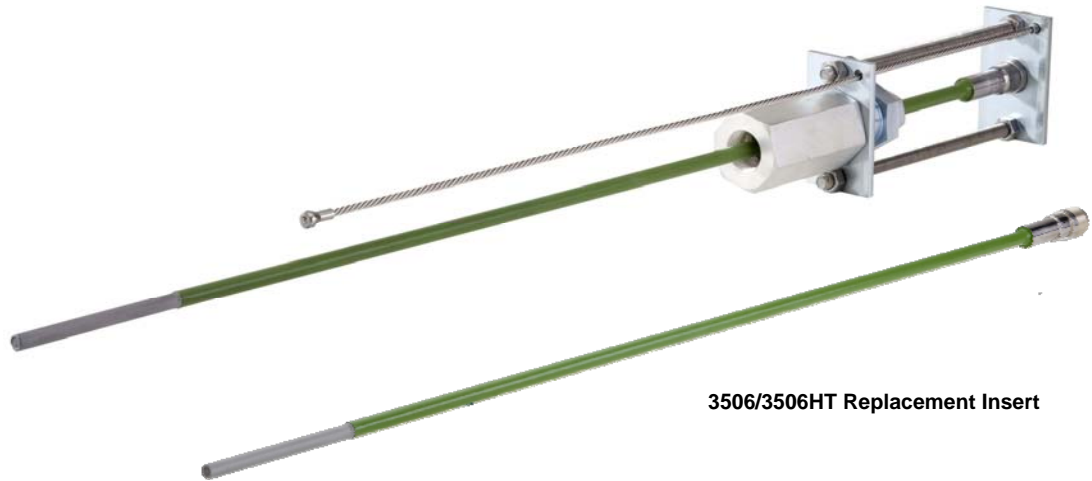
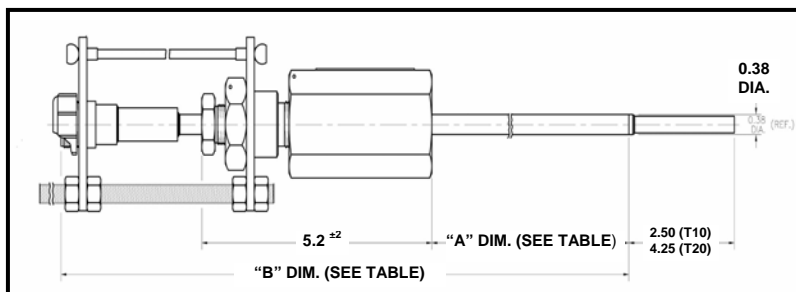


Model 3504/3504HT Small Diameter CORROSOMETER® Probes

CYLINDRICAL ELEMENT



3506/3506HT Replacement Insert



Order Length	"A" Dimension		"B" Dimension	
	Inches	mm	Inches	mm
18	14.34	364	22.25	565
24	20.34	517	28.25	717
30	26.34	805	34.25	869
36	32.34	821	40.25	1022

"A" Dimension is with probe fully inserted into packing gland

Specifications:

- **Mounting** — 3/4" Full Port Valve w/1/2" ID Minimum
- **Temp. Rating for Model 3504** — +500° F/+260° C
- **Temp. Rating for Model 3504HT** — +850° F/+454° C
- **Pressure Rating** - 1000 PSI/6.9 MPa
- **Element Seal Material** — All Welded
- **Fill Material** — Ceramic
- **Probe Body Material** — As Element

Model 3504 Retractable Process Probes have a thin walled tubular sensing element made from the alloy of interest welded onto a body of the same material. Mild Steel bodies are Teflon coated. No other materials contact the corrosive process fluid. Materials of construction are carefully matched and welds are vacuum annealed during assembly to avoid preferential corrosion effects.

Model 3504 Probes provide a large test surface, excellent dynamic temperature response and protection of reference element. They are ideally suited to the more

aggressive plant conditions and may be used in very aggressive organic or inorganic fluids over the entire pH range 0-14, subject to process containment requirements.

These probes are standard in mild steel, 304 S.S. and 316 S.S.. Certain other alloys can be provided on special order; please contact the factory for information. The useful measuring lives of the T-10 and T-20 probe elements are 5 mils (0.13mm) and 10 mils (0.25mm) respectively.

Element Availability:

UNS Number	Alloy Code	Alloy	T10	T20	T50	UNS Number	Alloy Code	Alloy	T10	T20	T50
K03005	-----	Pipe Grade Carbon Steel	•	•	•	N08020	8043	CARP 20-Cb3		•	
G41300	8005	4130 Carbon Steel		•		S50400	8046	9% Cr 1% Mo		•	
S30400	8013	304 S.S.	•	•	•	N02200	8048	Nickel 200	•		
S30403	8014	304L S.S.	•	•		N04400	8054	Monel 400	•	•	
S31000	8018	310 S.S.	•			N06600	8057	Inconel 600	•		
S31600	8020	316 S.S.	•	•		N06625	8058	Inconel 625		•	
S31603	8021	316L S.S.	•	•		C71500	8060	CuNi 70/30 CDA #715		•	
S31700	8022	317 S.S.		•		N10665	8086	Hastelloy B2		•	
S32100	8024	321 S.S.		•		N10276	8088	Hastelloy C-276		•	
S50200	8040	502 S.S. (5% Cr 1/2% Mo)	•	•		N06007	8089	Hastelloy-G		•	
N08904	8041	904L S.S.	•			R50400	8093	Titanium Grade 2 & 4		•	
		Inches	.005	.010	.025			Inches	.005	.010	.010
		Useful Range (mm)	.127	.254	.635			Useful Range (mm)	.127	.254	.635

Table 1

Other element alloys or styles may be supplied subject to material availability.

Ordering Information:

Model	Retractable CORROSOMETER® Probes – Cylindrical Element Assembly
3504	Complete Probe Assembly With Stuffing Box
3504HT	Complete High Temperature Assembly
3506	Model 3504 Replacement Insert
3506HT	High Temperature Replacement Insert
	Code Element Form: See Table 1 for availability
	T10 10 mil thickness (5 mil useful probe life)
	T20 20 mil thickness (10 mil useful probe life)
	Code Element Alloy: See Table 1 for availability
	XXXXXX Enter UNS number
	Code Order Length
	18 18 Inches
	24 24 Inches
	30 30 Inches
	36 36 Inches
	Code Safety Clamp (Not an option for 3506 and 3506HT)
	1 Safety Clamp Installed
3504	T10 K03005 18 1 Example
3506	T10 K03005 18 Example
3504HT	T20 K03005 18 1 Example
3506HT	T20 K03005 18 Example

*Carbon Steel for Carbon Steel Elements, Stainless Steel for all others.

Unit Weight: Probe Assembly with Safety
Clamp – 7 lbs/3.18
Insert Only – 2.5 lbs/1.13 kg



Rohrback Cosasco Systems, Inc.
11841 East Smith Avenue
Santa Fe Springs, CA 90670, USA
Tel: (1) 562-949-0123 Fax: (1) 562-949-3065
US Toll Free: 800-635-6898
E-Mail: sales@cosasco.com
Web Site: <http://www.cosasco.com>

