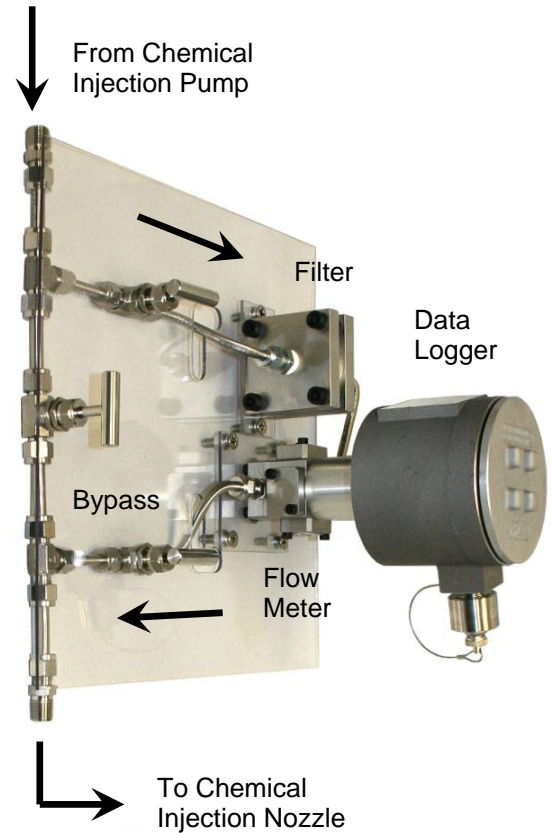


RDC-CI Chemical Injection Data Logger

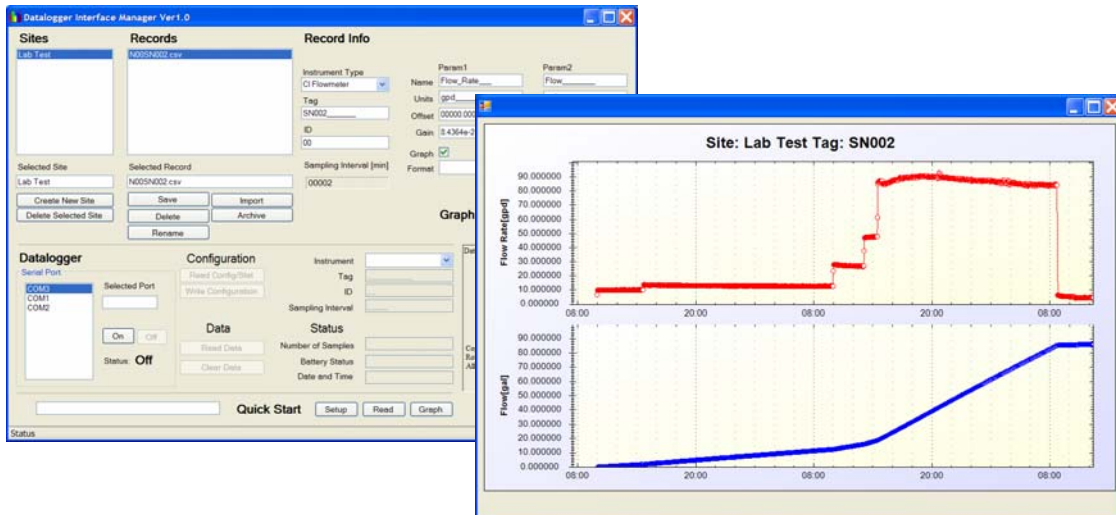
- **Improve your Chemical Cost Management Efficiency**
- **Ensure Correct Injection Rates are always maintained**
- **Battery operated for easy installation in Remote Locations**
- **Exceptional Wide Operating Range from 0.5 to 100 gallons per day**
- **Use with Wide Variety of Chemicals**
- **Wide Operating Temperature – 40C to +70C**
- **Simple Data Transfer**
- **Software included**



The new RDC-CI chemical injection data logger has been designed to complement our existing range of Microcor® and Corrddata® corrosion monitoring data loggers. One of the main purposes of a corrosion monitoring data logger is to check that the correct chemical injection rate is being applied and working properly. Chemical over-treatment can be expensive especially with corrosion prevention chemicals, and under-treatment can be catastrophic and even more costly. It is all too easy, particularly in remote locations, to have problems with chemical injection from low tank levels, pump failures, vapor lock in high temperature situations, and more. In addition, the typical low flow injection rates of chemical additives can be difficult to measure and maintain accurately. The RDC-CI data logger directly monitors the flow to the chemical injection quills or nozzles with its accurate positive displacement flow meter designed to continuously check the actual injection rate. The RDC-CI can be permanently piped in for continuous monitoring or piped in on a temporary basis with our accessory kit of flexible 6 ft hoses and sealing quick-connect couplings, to allow for occasional in-line testing.

Every 5/10,000 th gallon volume increment is measured and totalized into selectable interval "buckets" of between 2 min and 1 day over which the rate is computed. The battery life is typically 6 months.

Collected data can be transferred directly to a laptop if located in a safe area or with a Checkmate DL in a hazardous area. Data is stored in a CSV file format and can be viewed graphically as flow rate and integrated flow on the supplied software.



Data Logger Interface Manager Graphical Display Interface of Flow Rate and Integrated Flow with synchronized zooming

Specifications:

Flow Rate: 0.5 to 100 US gpd
Viscosity Range: Up to 500CPS at 100 US gpd
Temperature Range: Fluid 500 F (260 C)
Upstream Filter: 10 microns
Pressure Rating: Standard 1000 psi
 High pressure 3000 psi
Flowmeter Material: Stainless Steel Type 303
Connections: ¼" NPT Male
Flowmeter Seals: Teflon
Battery: 3.6 V Lithium (1)

Resolution: 5.85865 x 10⁻⁵ US gal./pulse
Accuracy: At 1 US gal./day and 10 min. sampling interval (Pulses = 118) accuracy better than 1%
Rate Sampling Interval: Settable 2 to 1440 min
Reading Storage: Up to 8000
Hazardous Area Rating: System Certification for Class 1 Div 2 and Zone 2 in process. Uses currently rated area certified components

Ordering Information:

Model	Chemical Injection Data Logger						
RDC-CI	Complete Data Logger Assembly complete with Installation Kit (includes Data Logger Interface Manager PC Software and RDC/Wireless to PC Communication Cable)						
	<table border="1"> <thead> <tr> <th>Code</th> <th>Maximum Pressure Rating</th> </tr> </thead> <tbody> <tr> <td>1000</td> <td>1000 psi</td> </tr> <tr> <td>3000</td> <td>3000 psi</td> </tr> </tbody> </table>	Code	Maximum Pressure Rating	1000	1000 psi	3000	3000 psi
Code	Maximum Pressure Rating						
1000	1000 psi						
3000	3000 psi						
	<table border="1"> <thead> <tr> <th>Code</th> <th>Injection Pump Seals</th> </tr> </thead> <tbody> <tr> <td>TEF</td> <td>Teflon</td> </tr> <tr> <td>VIT</td> <td>Viton</td> </tr> </tbody> </table>	Code	Injection Pump Seals	TEF	Teflon	VIT	Viton
Code	Injection Pump Seals						
TEF	Teflon						
VIT	Viton						
RDC-CI - 1000 - TEF	Example: Chemical Injection Data Logger, 1000 psi rating, with Teflon Flowmeter seals						

Accessories: Checkmate DL RDC-CI, RDC, & Microcor Logger data transfer unit for Hazardous Areas
 P/N 001696 Quick-Connect Flexible hoses, 5000 psi, each 6 ft long

Replacement Parts: P/N 702167 Replacement Battery for RDC-CI
 P/N 001700 Filter Replacement Element Kit



Rohrback Cosasco Systems, Inc.
 11841 East Smith Avenue
 Santa Fe Springs, CA 90670, USA
 Tel: (1) 562-949-0123 Fax: (1) 562-949-3065
 US Toll Free: 800-635-6898
 E-Mail: sales@cosasco.com
 Web Site: <http://www.cosasco.com>



ISO 9001:2008
 Certificate No. FM 10694